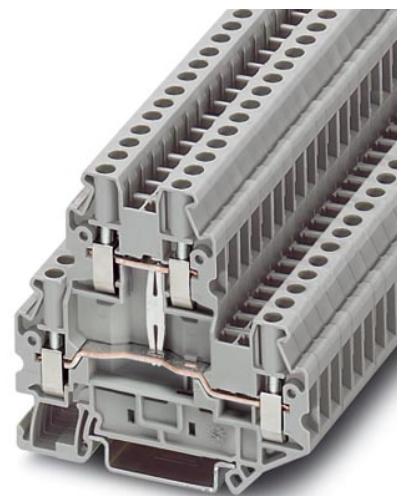


UTT 4-PV

Order No.: 3044733



<http://eshop.phoenixcontact.de/phoenix/treeViewClick.do?UID=3044733>

Double-level terminal block with a screw connection, cross section:
0.14 mm² - 6 mm², AWG: 26 - 10, width: 6.2 mm, color: Gray



Commercial data	
EAN	4017918997069
Pack	50 Pcs.
Customs tariff	85369010
Weight/Piece	0.021186 KG
Catalog page information	Page 41 (CL-2007)

Product notes

WEEE/RoHS-compliant since:
01/17/2005



<http://www.download.phoenixcontact.com>
Please note that the data given here has been taken from the online catalog. For comprehensive information and data, please refer to the user documentation. The General Terms and Conditions of Use apply to Internet downloads.

Technical data

General

Number of levels	2
------------------	---

Number of connections	4
Color	gray
Insulating material	PA
Inflammability class acc. to UL 94	V0

Dimensions

Width	6.2 mm
Length	69.9 mm
Height NS 35/7,5	65 mm
Height NS 35/15	72.5 mm

Technical data

Rated surge voltage	8 kV
Pollution degree	3
Surge voltage category	III
Insulating material group	I
Connection in acc. with standard	IEC 60947-7-1
Nominal voltage U_N	800 V

Connection data

Conductor cross section solid min.	0.14 mm ²
Conductor cross section solid max.	6 mm ²
Conductor cross section stranded min.	0.14 mm ²
Conductor cross section stranded max.	6 mm ²
Conductor cross section AWG/kcmil min.	26
Conductor cross section AWG/kcmil max	10
Conductor cross section stranded, with ferrule without plastic sleeve min.	0.25 mm ²
Conductor cross section stranded, with ferrule without plastic sleeve max.	4 mm ²
Conductor cross section stranded, with ferrule with plastic sleeve min.	0.25 mm ²
Conductor cross section stranded, with ferrule with plastic sleeve max.	4 mm ²
2 conductors with same cross section, solid min.	0.14 mm ²
2 conductors with same cross section, solid max.	1.5 mm ²
2 conductors with same cross section, stranded min.	0.14 mm ²

2 conductors with same cross section, stranded max.	1.5 mm ²
2 conductors with same cross section, stranded, ferrules without plastic sleeve, min.	0.25 mm ²
2 conductors with same cross section, stranded, ferrules without plastic sleeve, max.	1.5 mm ²
2 conductors with same cross section, stranded, TWIN ferrules with plastic sleeve, min.	0.5 mm ²
2 conductors with same cross section, stranded, TWIN ferrules with plastic sleeve, max.	2.5 mm ²
Type of connection	Screw connection
Stripping length	9 mm
Internal cylindrical gage	A4
Screw thread	M3
Tightening torque, min	0.6 Nm
Tightening torque max	0.8 Nm

Certificates / Approvals



CSA

Nominal voltage U _N	600 V
Nominal current I _N	30 A
AWG/kcmil	26-10

CUL

Nominal voltage U _N	600 V
Nominal current I _N	30 A
AWG/kcmil	26-10

UL

Nominal voltage U _N	600 V
Nominal current I _N	30 A
AWG/kcmil	26-10
Certification	CSA, CUL, GL, UL

requested approbations

Certification Ex:	IECEX, KEMA-EX
-------------------	----------------

Accessories		
Item	Designation	Description
Assembly		
3047316	ATP-UTT8 2,5/4	Partition plate, for visual and electrical separation of terminal groups, width: 2 mm, color: gray
3047293	D-UTT8 2,5/4	Cover, width: 2.2 mm, color: gray
Bridges		
3030336	FBS 2-6	Plug-in bridge for cross-connections in the terminal center, 2-pos., color: Red
3030242	FBS 3-6	Plug-in bridge for cross-connections in the terminal center, 3-pos., color: Red
3030255	FBS 4-6	Plug-in bridge for cross-connections in the terminal center, 4-pos., color: Red
3030349	FBS 5-6	Plug-in bridge for cross-connections in the terminal center, 5-pos., color: Red
3030271	FBS 10-6	Plug-in bridge for cross-connections in the terminal center, 10-pos., color: Red
3030365	FBS 20-6	Plug-in bridge for cross-connections in the terminal center, 20-pos., color: Red
3032224	FBS 50-6	Plug-in bridge for cross-connections in the terminal center, 50-pos., color: Red
General		
3047303	DP-UTT8 2,5/4	Spacer plate, compensates for level offset if standard terminal blocks are to be fitted adjacently, 2.5 mm thick
Marking		
0811228	X-PEN 0,35	Marker pen without ink cartridge, for manual labeling of markers, labeling extremely wipe-proof, line thickness 0.35 mm
5060935	ZB 6/WH-100:UNBEDRUCKT	Zack strip, unprinted: For individual labeling with M-PEN, ZB-T or CMS system, large batch, sufficient for labeling 1000 terminal blocks, for a terminal width of 6.2 mm, color: White
1050499	ZB 6:SO/CMS	Zack strip, 10-section, divisible, special printing, marking according to customer requirements
1051003	ZB 6:UNBEDRUCKT	Zack strip, unprinted, strips with 10 labels for individual labeling with M-PEN or CMS system, for terminal block width: 6.2 mm, color: white
Plug/Adapter		
0201689	MPS-IH BU	Insulating sleeve (blue), for MPS metal part to be ordered separately (0201744)

0201676	MPS-IH RD	Insulating sleeve (red), for MPS metal part to be ordered separately (0201744)
0201663	MPS-IH WH	Insulating sleeve (white), for MPS metal part to be ordered separately (0201744)
0201744	MPS-MT	Test plug, consisting of: Metal part for 2.3 mm diameter socket hole
3030925	PAI-4	Test adapter, for 4 mm diameter test plug PS and safety test plug, makes contact in the bridge shaft
3030996	PS-6	Modular test plug, for individual assembly of test plug strips, for UT, ST, DT and QT terminal blocks, can be labeled with ZBF 6, color: Red

Tools

1205053	SZS 0,6X3,5	Screwdriver, bladed, matches all screw terminal blocks up to 4.0 mm ² connection cross section, blade: 0.6 x 3.5 mm, without VDE approval
---------	-------------	--